



22 Harvey Avenue, Chippenham, SN15 1UL

£332,500

Offered for sale with NO ONWARD CHAIN this double fronted semi detached property has been well cared for by the current owners. Internally comprising; entrance hall, cloakroom, lounge, kitchen/dining room, three bedrooms, family bathroom and en suite shower room. There is parking for two cars and a part walled enclosed garden laid to patio and lawn with garden shed. An ideal family home.

Entrance Hall

Double glazed front door, radiator, Amtico flooring, storage cupboard, doors to the lounge, kitchen/dining room and cloakroom, stairs to the first floor.

Cloakroom

Toilet, wash hand basin and radiator.

Lounge



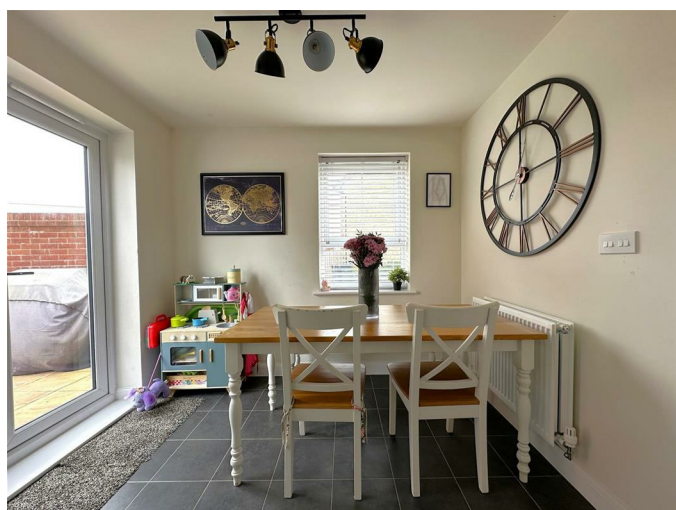
Double glazed windows to the front and side with radiator.



Kitchen/Dining room



Double glazed windows to the front and side, double glazed French doors to the garden, radiator, space for table and chairs, range of floor and wall mounted units, electric oven, gas hob, extractor fan, fridge/freezer, washing machine, dishwasher and wall mounted gas fired boiler.





Landing

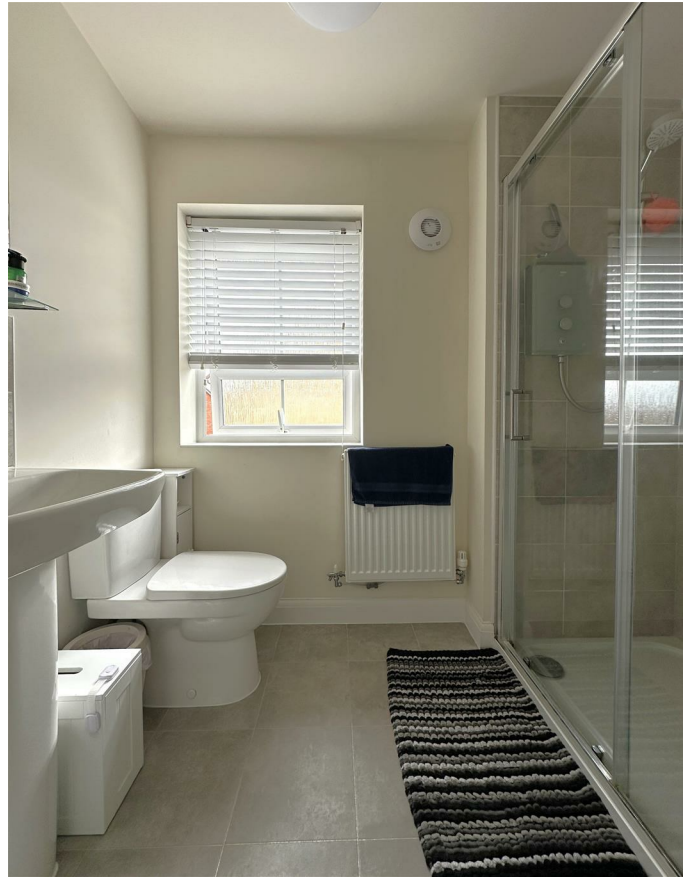
Doors to bedrooms, bathroom and airing cupboard.

Bedroom One



Double glazed window to the side, radiator and door to the en suite.

En Suite



Double glazed window to the front, radiator, toilet, wash hand basin and shower cubicle.

Bedroom Two



Double glazed window to the side and radiator.

Bedroom Three



Double glazed window to the side and radiator.

Bathroom



Double glazed window to the front, radiator, toilet, wash hand basin and bath with shower screen.

Garden



Laid to areas of patio and lawn, part walled with garden shed and gated access to the front.

Driveway

There is side by side parking for two cars located to the left hand side of the pair of semi detached homes.

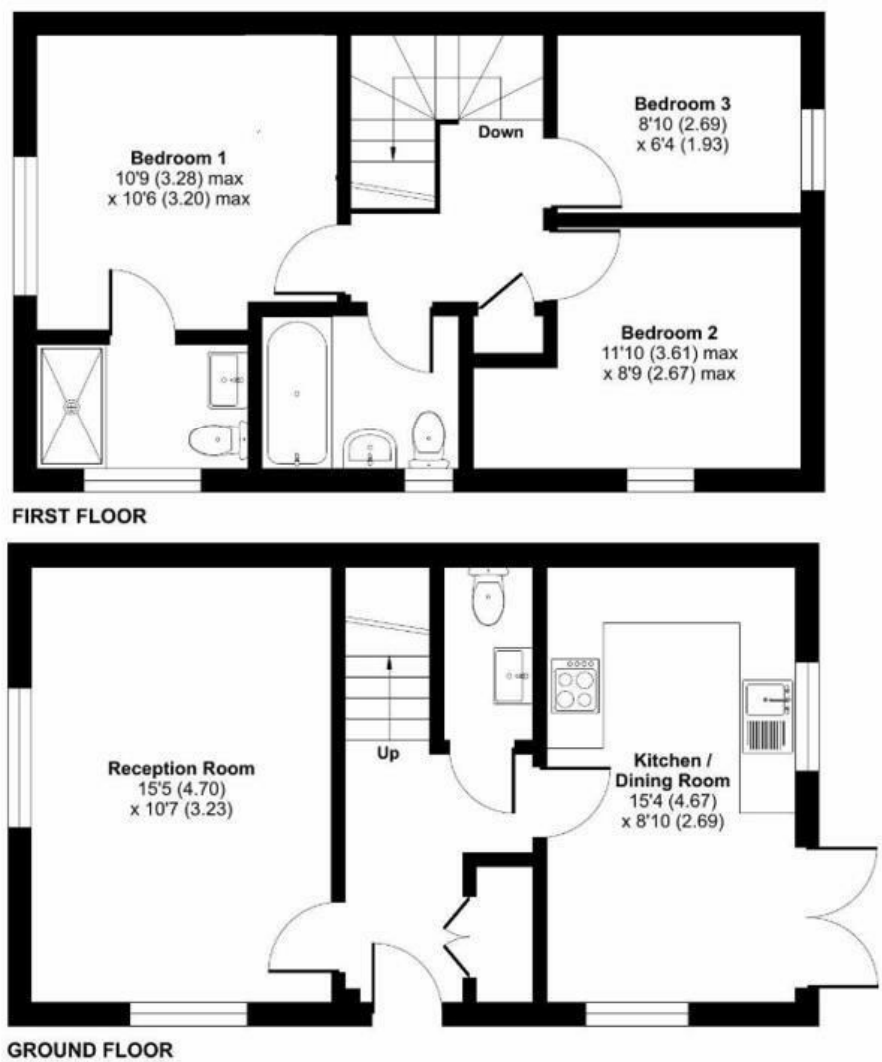
Tenure

We are advised by the .gov website that the property is Freehold.

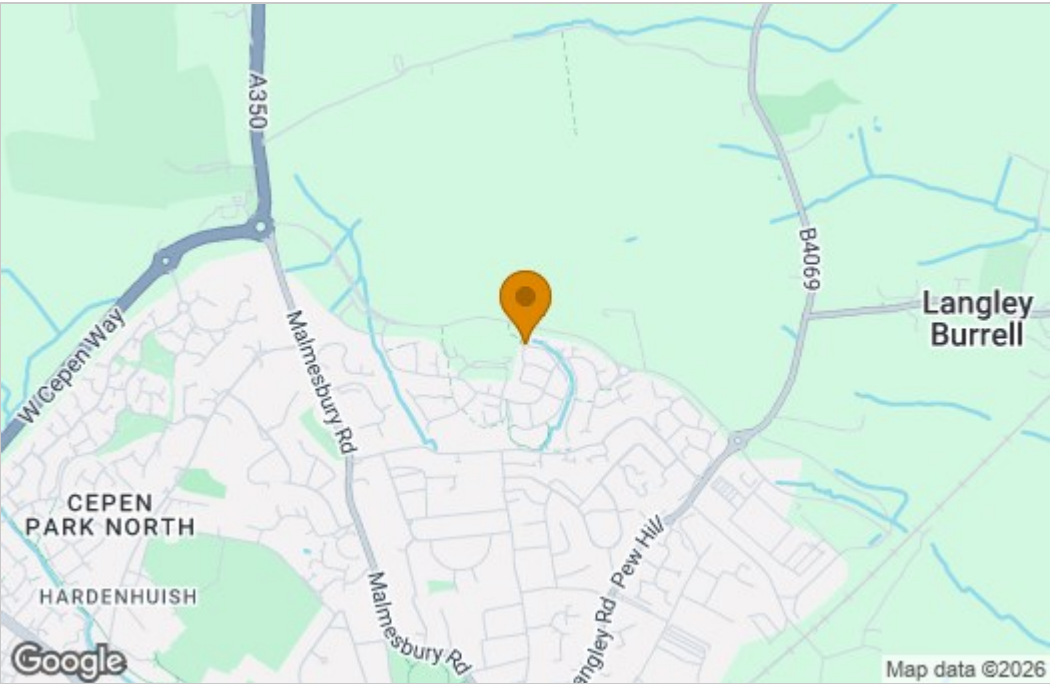
Council Tax

We are advised by the .Gov website that the property is band D.

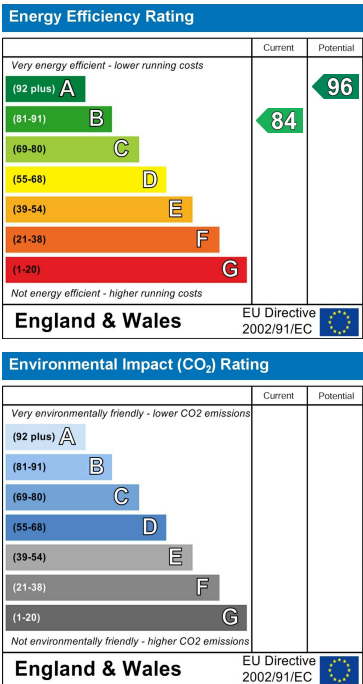
Floor Plan



Area Map



Energy Efficiency Graph



These particulars, whilst believed to be accurate are set out as a general outline only for guidance and do not constitute any part of an offer or contract. Intending purchasers should not rely on them as statements of representation of fact, but must satisfy themselves by inspection or otherwise as to their accuracy. No person in this firms employment has the authority to make or give any representation or warranty in respect of the property.